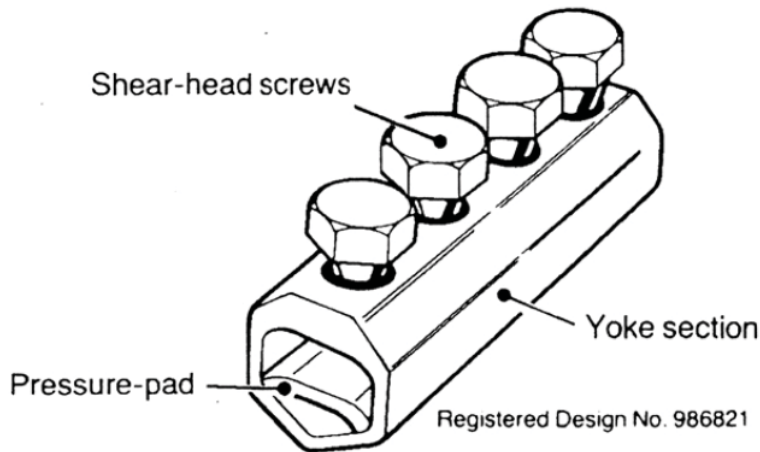


MF1 Connector



Principle Application

Stranded 3 & 4 core cables in the following ranges: -

Connector reference	Core c.s.a. (mm ²)		Approx Unit Wt. (gms)
	min.	max.	
MF1/1	50	95	110
MF1/2	95	185	170
MF1/3	185	300	300
MF1/4	300	500	390
MF1/3A	150	300	380

The ISP mechanical ferrule for straight-through joints is designed as an alternative to the orthodox sweated ferrule in applications up to 11kV., and offers certain advantages over the traditional connector.

Fitting is relatively simple and specialised tools are not required. The connectors can be used with confidence where the sweating method of jointing is either unfeasible or uneconomic. Another important advantage is the suitability of the mechanical ferrule for jointing situations where the use of naked flames or other heating methods are prohibited e.g. mining or petrol-chemical locations. The completed connection on each conductor has a smooth profile and assists in the formation of a compact joint.

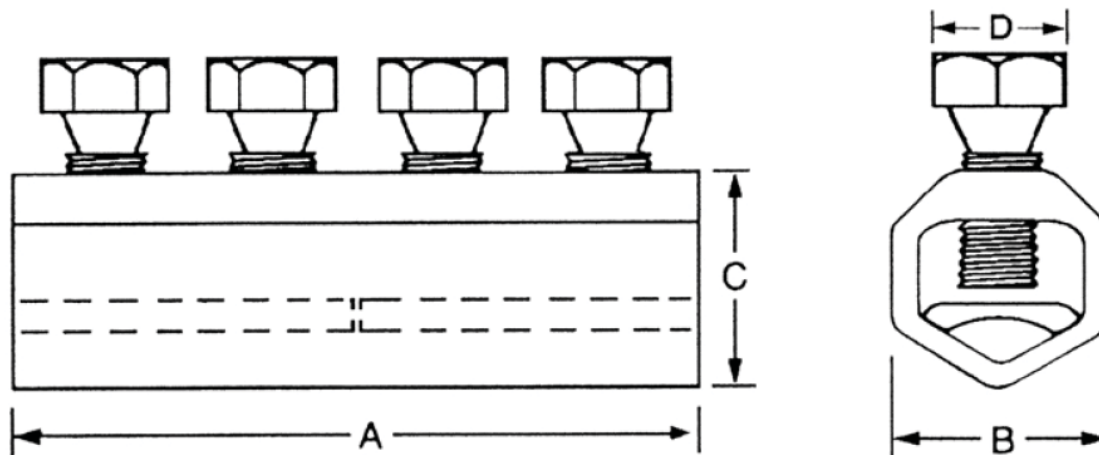
Each connector is supplied complete in a sealed pack together with fitting instructions. Further details of fitting procedures are included in the technical details overleaf.

Subject to change without notice

Version Feb. 2010

Cable joints and accessories • Sealing systems • Customer specific solutions

Physical Dimensions



Ref. Code	Dimensions (mm)			
	A	B	C	D
MF1/1	80.0	25.0	25.0	13.0
MF1/2	100.0	34.0	32.5	17.0
MF1/3	120.0	40.0	41.0	17.0
MF1/4	120.0	47.5	51.0	19.0
MF1/3A	120.0	40.0	41.0	17.0

Material

Aluminium Alloy

Fitting Instructions

Cut the cores to length, strip the insulation from each core equal to the length of a pressure pad plus 6 mm and thoroughly abrade the exposed conductors. Loosen the screws, and fit the connector over one of the cores, where possible sliding the full length of the barrel back over the insulation. Align the cores and slide the connector back over both conductors until centrally located. Insert the pressure pads and tighten the screws consecutively, one turn at a time until the heads are sheared from all four screws.

* Copper conductors must be wrapped in brass gauze to improve the electrical stability of the connection.

Subject to change without notice

Version Feb. 2010

Cable joints and accessories • Sealing systems • Customer specific solutions